



**marmox®**

**MARMOX**  
NICHE AND SHELVES BROCHURE

# table of contents

01 ..... Niches And Shelves Introduction

---

01 ..... Niche Introduction and Highlights

---

02 ..... Sizes

---

03 ..... How To Install

---

04 ..... Shelves Introduction

---

04 ..... Shapes And Colours Available

**Marmox**

**Innovative  
Construction  
&  
Insulation  
Solutions**

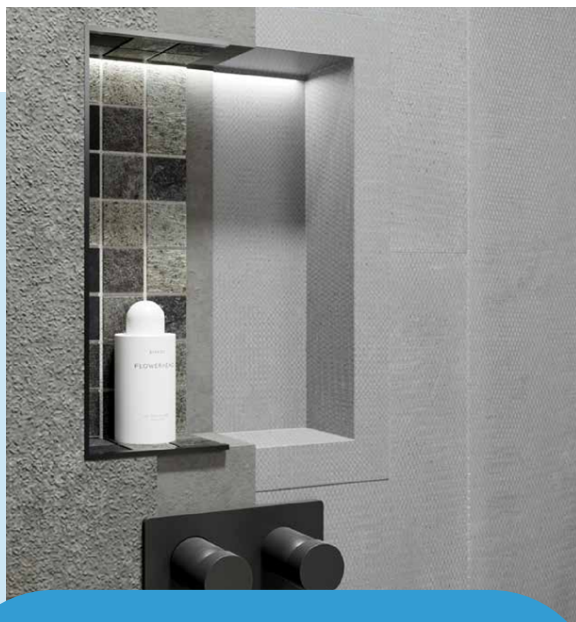


## Niches And Shelves Introduction

Elevate your bathroom design with our practical shelves and niches, designed to seamlessly blend functionality with style.

Our selection is crafted to save space while keeping your bathroom impeccably organised and in vogue.

Your bathroom is your sanctuary, and we believe it should be both cosy and practical. That's why we've curated a selection of accessories, including niches and corner shelves, to enhance your space.



*Suitable for private and commercial use*



## Niches

Discover the Marmox Shower Niche, offering a low-cost, easily installed, and completely waterproof solution.

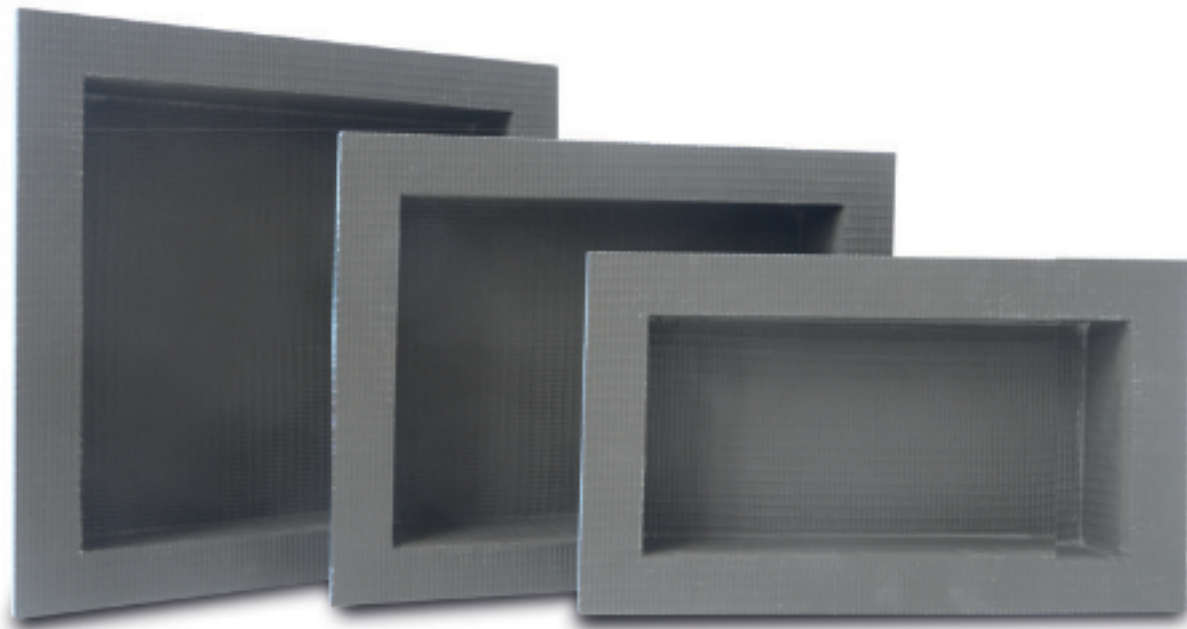
With its thermal insulation properties and readiness for tiling, this niche is both durable and aesthetically pleasing.

Marmox niches is a prefabricated wall unit to elevate your bathroom design.

Installation in the wall of shower areas. They are ideally suited to provide a shelf for shampoo or shower gel or even just be used for decoration purposes in the bathroom.

## Key Benefits

- Stylish & convenient
- Easy to install
- Ideal for wet areas
- Many sizes available



## Highlights

Shower niches are extremely practical when wet rooms are being created and work exceptionally well with Marmox Multi Boards.

- Comes already constructed which guarantees the conformity and the size.
- Lightweight and easy to work with
- Ready to waterproof and then tile
- Provides thermal insulation
- Fit walls with cavities 86mm or deeper
- Can be used to form a recess for toiletries within showers and other wet areas.
- Perfect for a DIY or professionally built bathroom

**NEW** | Prefinished Niches that provides you with appealing modern style for your bathroom

## Sizes (Australia)

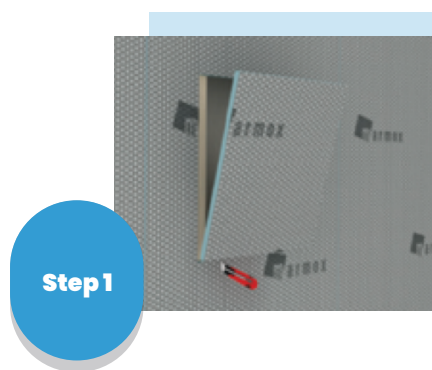
Internal Dimensions

Sizes	Length	Width	Thickness
Small	300 mm	260 mm	80 mm
Medium	300 mm	380 mm	80 mm
Large	300 mm	550 mm	80 mm
XL	300 mm	700 mm	80 mm

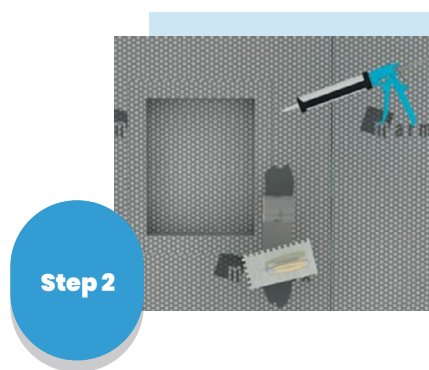




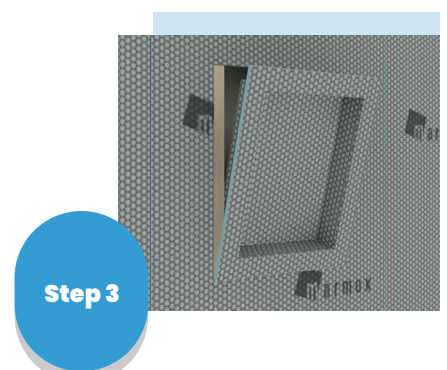
## Installation



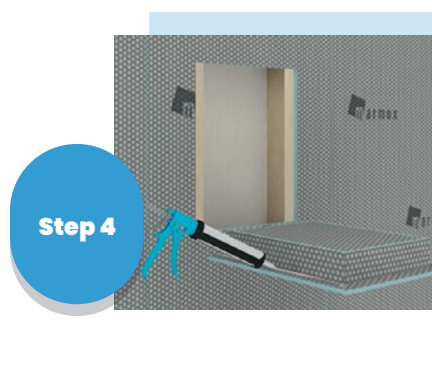
Cutting out the building board in the designated area.



Apply adhesive.



Fitting and fixing by Gluing the joints and embedding of the waterproofing membrane.



Use a minimum of a 50mm screw and large washer in all the corners.



Tiling.



Finished Product

# Shelves

Elevate the functionality and style of your bathroom or kitchen with our exquisite corner shelves. Designed to maximize space utilization, these shelves seamlessly blend into the corners of your room, providing a practical storage solution without compromising on aesthetics.

Crafted with precision and attention to detail, our corner shelves offer a perfect balance of form and function. Whether you're adding finishing touches to a newly renovated space or enhancing an already tiled bathroom or kitchen, our shelves are ready for easy installation, ensuring convenience without compromising style.

Our shelves are not only functional but also stylish, providing added comfort and personalisation to your bathroom.

Explore our range and elevate your bathroom experience today!

## Shapes



Triangle  
Hexagon



Triangle  
Jungle



Triangle  
Pike



Triangle  
Water



## Colors



Gold



Stainless Steel

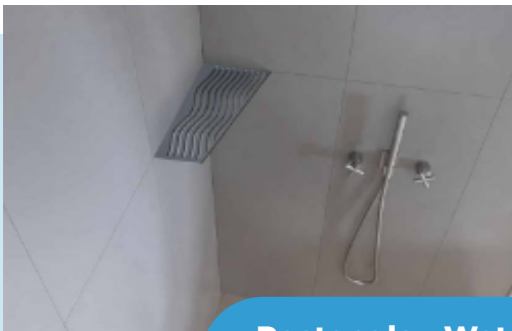


Black 9005

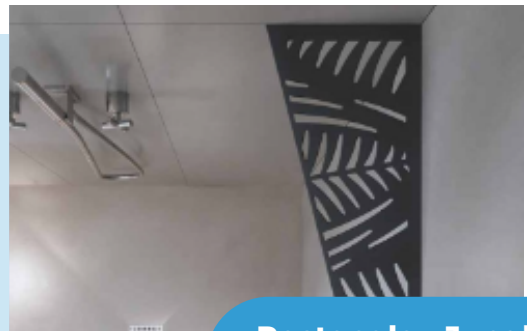


White 9003

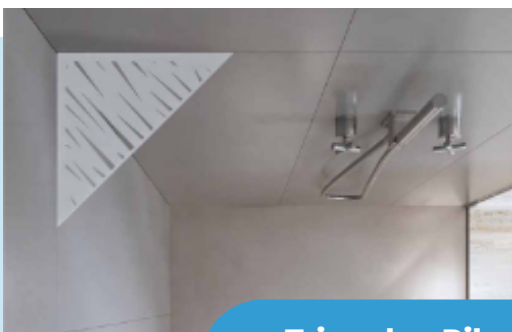
## Application



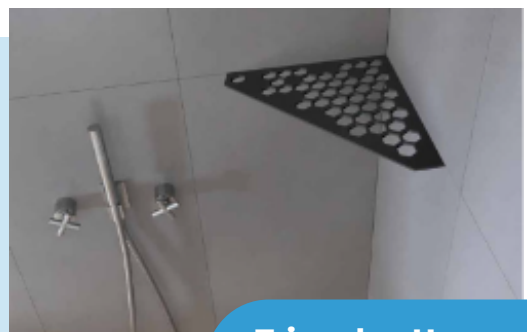
**Rectangle - Water**  
Stainless Steel



**Rectangle - Jungle**  
Black



**Triangle - Pike**  
White



**Triangle - Hexagon**  
Black

 1300 783 693  
 [info@marmox.com.au](mailto:info@marmox.com.au)  
 [www.marmox.com.au](http://www.marmox.com.au)

 PO BOX 2207 Taren Point  
Business Centre Taren Point  
NSW 2229 Australia



*IT'S WHAT'S UNDERNEATH THAT COUNTS*